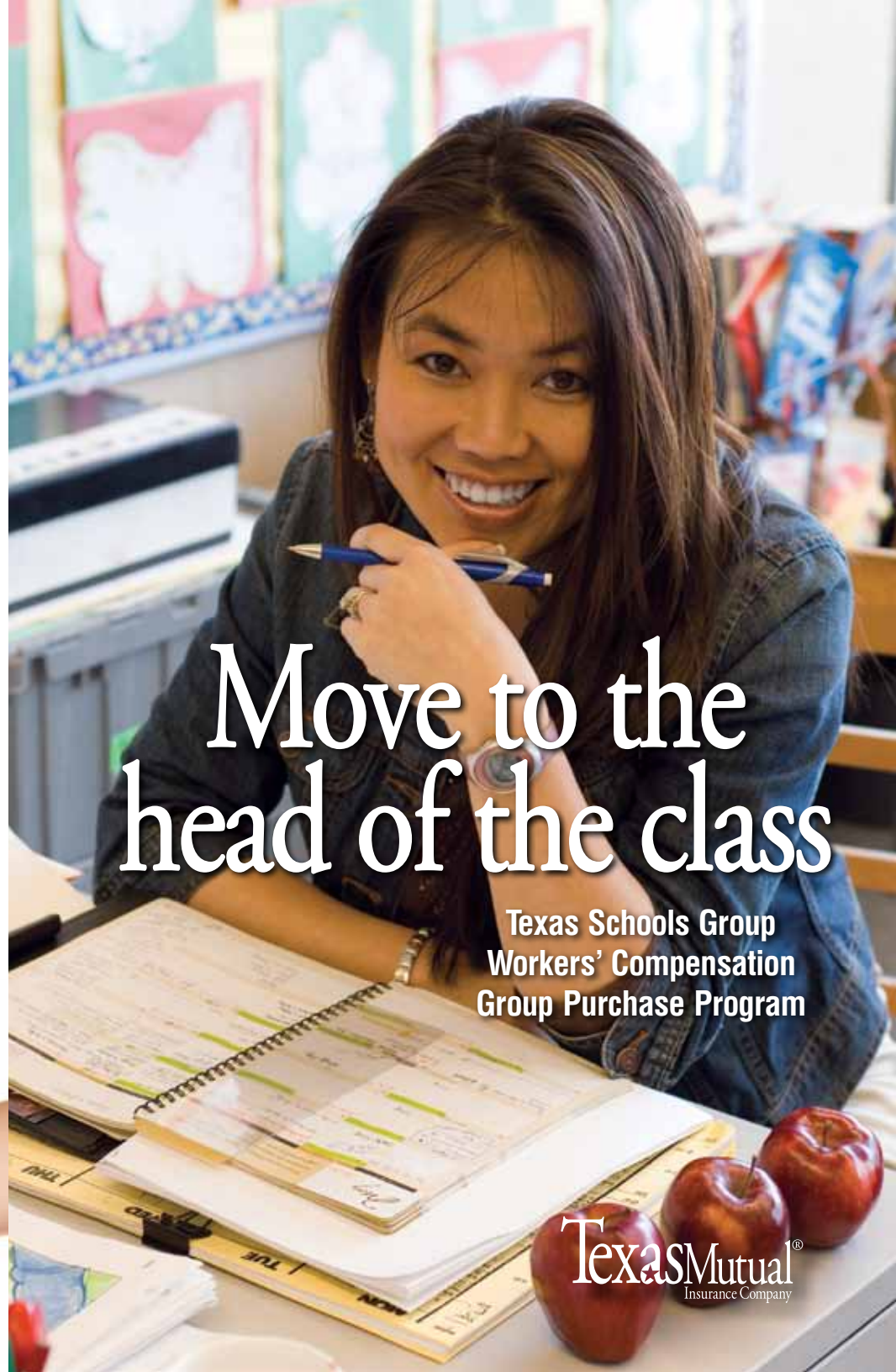


Texas Schools Group
Attn: Philip Bruce
P.O. Box 1400
Abilene, TX 79604

Raise your
hand for lower
workers' comp
premiums



Move to the head of the class

Texas Schools Group
Workers' Compensation
Group Purchase Program

TexasMutual[®]
Insurance Company

Earn extra credit

- Join the Texas Schools Group to receive an enhanced premium discount on your workers' compensation insurance.
- Eligible policyholders can earn an additional discount by participating in Texas Mutual Insurance Company's workers' comp health care network.

Enjoy honor roll service

- Each school retains its own experience modifier.
- Group members benefit from claim and loss prevention services, including an industry-specific safety plan.
- Any licensed Texas agent can submit qualifying clients for consideration in the group. For a list of eligible class codes, visit www.texasmutual.com, or call (800) 859-5995.
- You may also qualify for an individual and group dividend.*

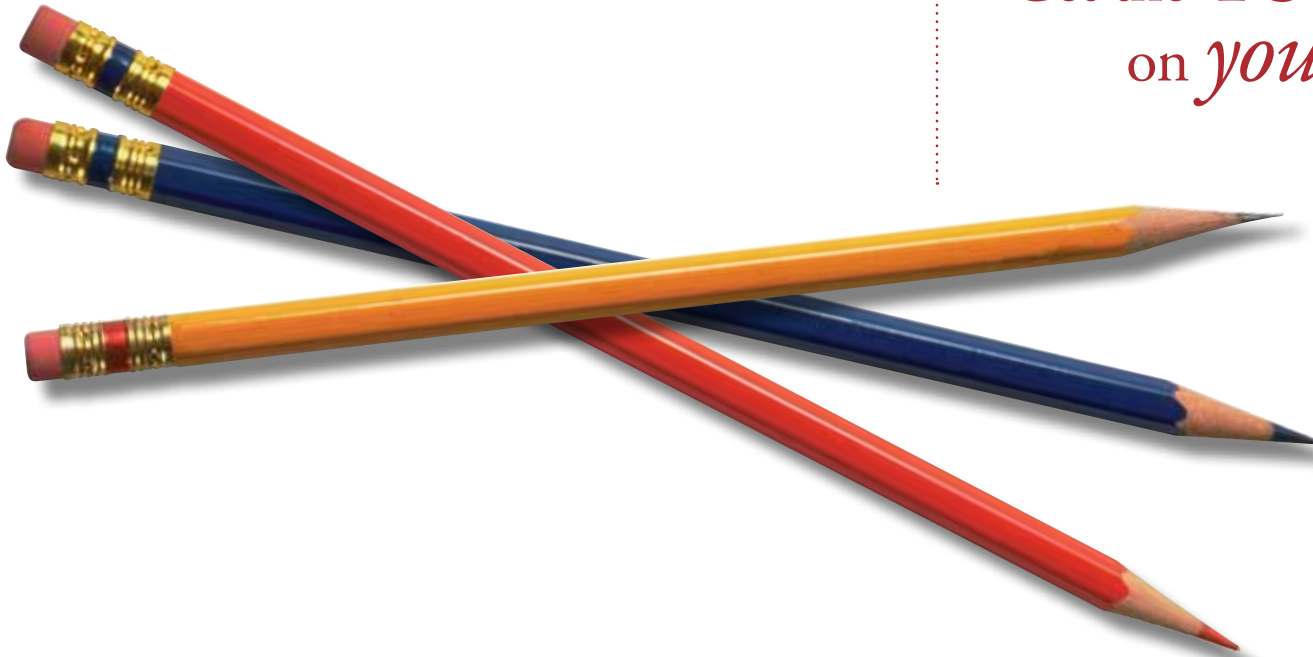
Do your homework

- Workers' comp coverage is the only insurance that provides medical and income benefits for injured workers *and* legal protection for employers.
- Texas Mutual Insurance Company is a leading writer of workers' comp group purchase programs.
- State law allows employers in similar businesses to buy their coverage as a group, with approval from the Texas Department of Insurance.

Ask the teacher

For more information about the Texas Schools Group, ask your agent, email Philip Bruce at brucep@perryhunterhall.com, or call Philip Bruce or Stomi J. Callaway at (325) 673-6414.

Get the TSG group discount
on *your* workers' comp
premium.



Texas Mutual[®]
Insurance Company

HERE FOR TEXAS. HERE TO STAY.[®]

*Past dividends are not a guarantee of future dividends, and the Texas Department of Insurance must approve all dividends. Texas Mutual Insurance Company has services for non-English speakers available upon request.