

# Motor Vehicle Safety: Steering Clear of the Leading Cause of Workplace Fatalities

**TexasMutual**<sup>®</sup>  
WORKERS' COMPENSATION INSURANCE  
WORK SAFE, TEXAS<sup>™</sup>



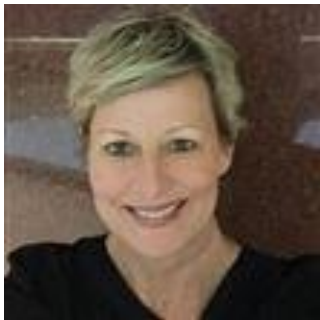
# Today's Webinar Team

## **Moderator: Jeremy Hansen**



Jeremy spent five years in field safety roles before becoming Texas Mutual's Safety Services Training Consultant in 2014. Jeremy holds the Occupational Health and Safety Technologist, Associate in Risk Management, and Associate in Insurance Services designations.

## **Presenter: Stacy Rose, CSP**



Stacy is a certified professional with 16 years' experience in workplace safety. Stacy holds a bachelor's in industrial engineering and a master's in safety engineering with a specialty in ergonomics. Stacy spent four years in the field as a Texas Mutual safety services consultant. Today, she supervises our new safety services support center.

# Agenda

1

## Workplace Fatalities

Leading causes  
Transportation types  
Texas Mutual stats

2

## Preventing Fatalities

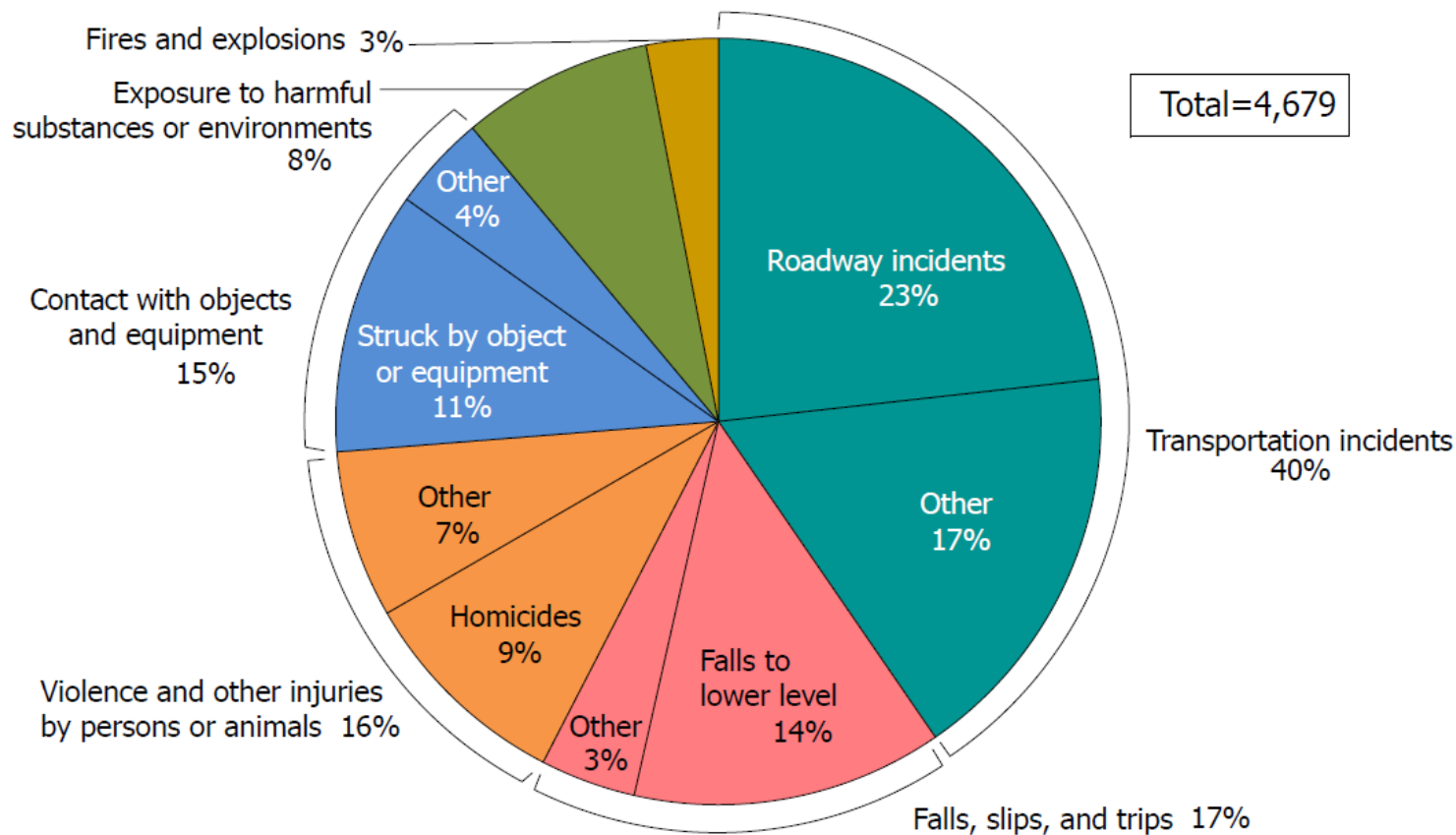
Develop a plan  
Equip your drivers  
Protect yourself



America's Deadliest Workplace

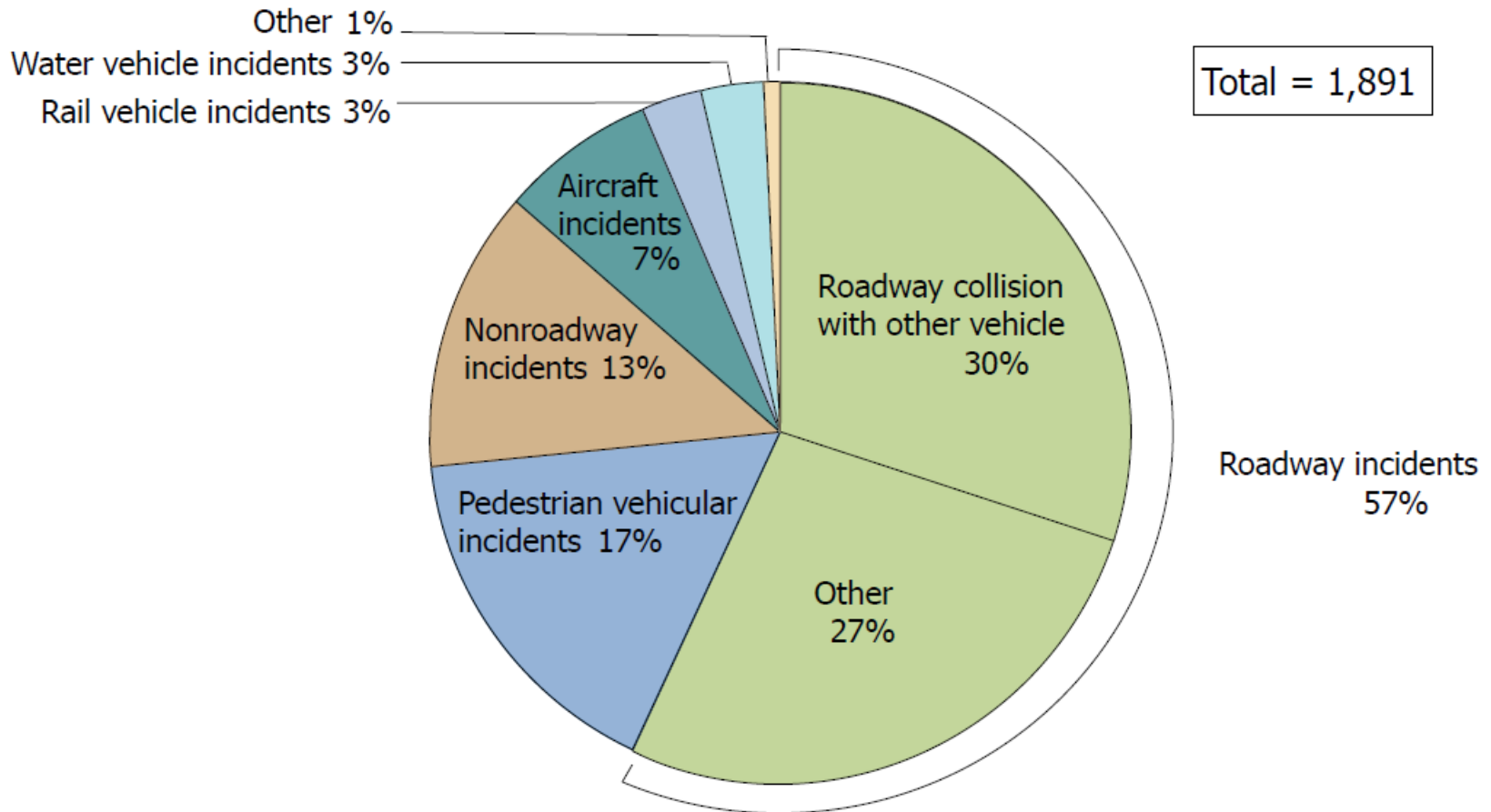
# 2014 Fatal Occupational Injuries

Fatal occupational injuries by major event, 2014\*



# 2014 Fatal Occupational Injuries Due to Transportation Types

Fatal occupational injuries due to transportation incidents by type, 2014\*

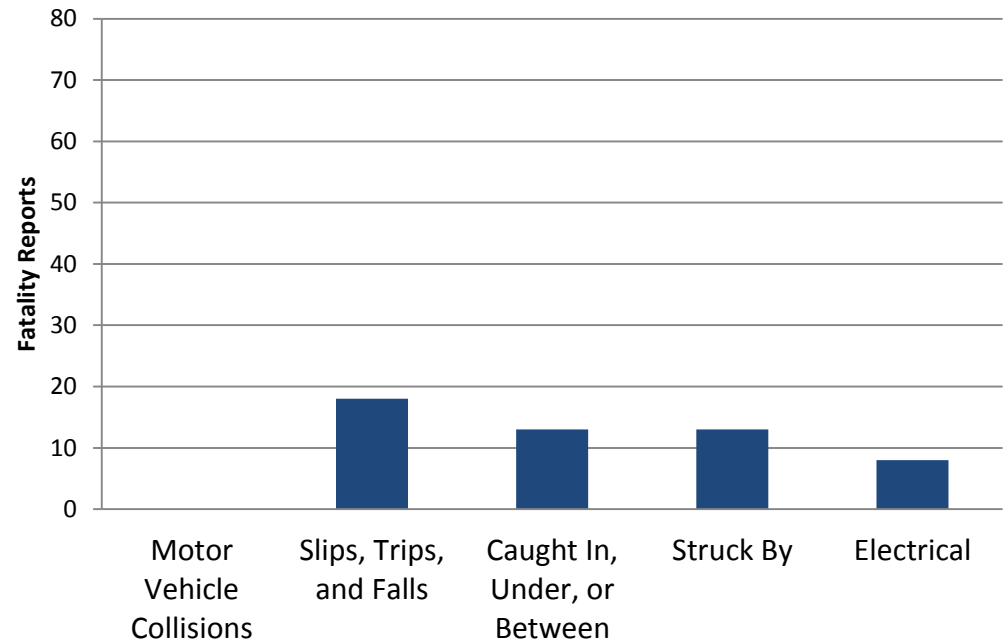


Source: U.S. Bureau of Labor Statistics, 2015

# 2014 Texas Mutual Fatalities



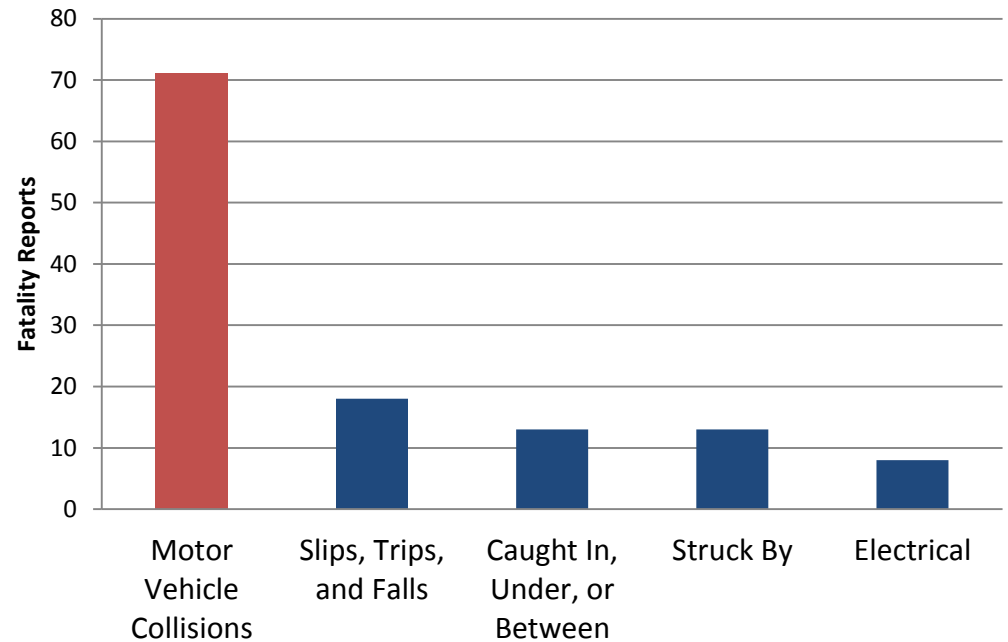
## Cause of Injury



# 2014 Texas Mutual Fatalities



## Cause of Injury







# Preventing Fatalities

What can you do?

1

### Develop a Plan

- Who should it cover?
- What should it include?
- How do I get started?

2

### Equip Your Drivers

- Training topics
- Training schedule
- Safety training resources

3

### Protect Yourself

- Documentation
- Documentation resources

# 1

# Develop a Plan

Who

What

How

Who should it  
cover?

What should it  
include?

How do I get  
started?

# Who Should It Cover?

## Authorized Use

### Company Vehicles

1 Which positions require driving privileges?

2 Which positions require assigned vehicles?

3 Is personal use permitted and tracked?

### Personal Vehicles

1 Are personal vehicles for business travel?

2 Are restrictions on vehicle use during business trips?

# What Should It Include?

Safe Operating Rules

Documentation

Driver  
Selection

Accident  
Investigations

Driver  
Retention

Inspections

The  
Plan

Training  
Requirements



# Safe Operating Rules



Seat belt use (drivers & passengers)

Distracted driving

Speeding

Fatigue prevention

Authorized/Unauthorized passengers

Alcohol consumption

# Driver Selection Standards

## Motor vehicle record check

- Moving violations
- Suspended or revoked license
- DUI/DWI
- Accident history

Valid driver's license

Road test, physical exam,  
drug/alcohol test

# Driver Retention Standards

Compliance with fleet safety policies

Compliance with substance abuse policy

Requirement to report moving violation & accidents

Up-to-date driver safety training

Periodic re-check of motor vehicle records



# Training

New hire training

Annual refresher training

Remedial training

Training for new vehicle type

# Inspections



Pre and Post-trip

Documentation

Response to inspection findings

Review of inspection reports

# Accident Investigation

1 Accident response

2 Investigation policy

3 Designated personnel

4 Accident investigation form

5 Determining preventability

# Documentation



Records

Record organization

Record retention

Audits

# How Do I Get Started?

Download free fleet safety policy template  
([texasmutual.com](http://texasmutual.com))

Download sample distracted driving policy  
([worksafetexas.com](http://worksafetexas.com))

Driving safety kit  
([safehandtexas.org](http://safehandtexas.org))

# 2

# Equip Your Drivers



Training topics



Training  
schedule



Safety training  
resources

# Equip Your Drivers



## Training topics

1 Driving safety program

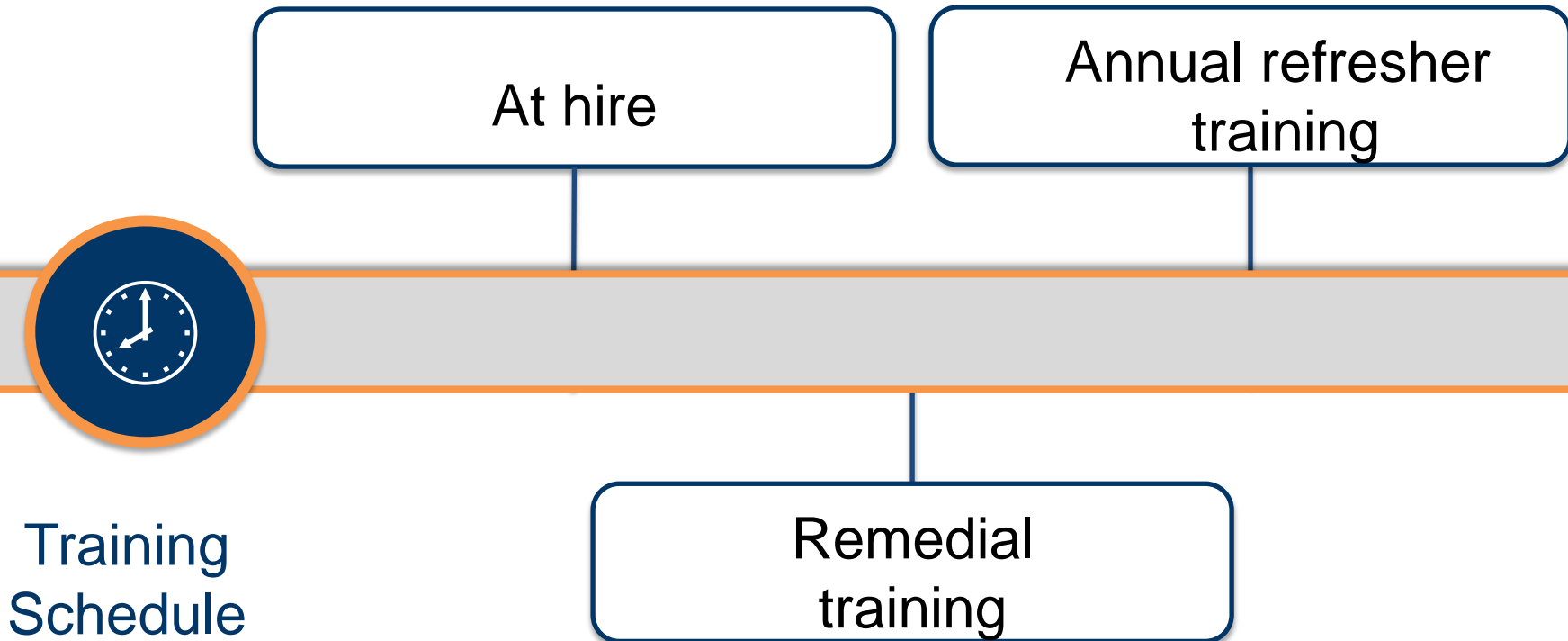
2 Defensive driving strategies

3 Distracted driving

4 Vehicle-specific training

5 Operation-specific training

# Equip Your Drivers



*Get Your Drivers Together!*



# Equip Your Drivers



## Safety Training Resources

1

Defensive driving

2

Vehicle-specific training  
DVDs

3

Handouts

4

Toolbox talks

5

Online videos

5

## Online videos

**TexasMutual**  
WORKERS' COMPENSATION INSURANCE  
A Policyholder-Owned Company  
WORK SAFE, TEXAS®

### **6** TO SAFE DRIVING with Woody Hill



Introduction



Speeding



Driver Distraction



Driver Fatigue



Driving Angry



Seat Belts



Slow Down

Power Down

Lie Down

Calm Down

Buckle Up

[Visit the Work Safe Texas Home Page](#)

# 3

# Protect Yourself



1

Documentation

2

Documentation  
resources

# Documentation

1. *Fleet safety policies*
2. *Driver selection documents*
3. *Training records*
4. *Inspection records*
5. *Accident investigation records*

# Texas Mutual Documentation Resources

Fleet safety program template

Road test record

Maintenance log



**Fleet Safety  
Program**

Safety meeting  
sign-in sheet

Accident  
investigation form

Vehicle inspection  
report

Trailer inspection  
report



# Key Takeaways



# Workplace Fatalities



# Preventing Fatalities



Developing a plan to address motor vehicle hazards.



# Preventing Fatalities



Developing a plan to address motor vehicle hazards

Equip your drivers for success through training

# Preventing Fatalities



Developing a plan to address motor vehicle hazards

Equip your drivers for success through training

Protect yourself by documenting safety activities

# Questions?



2-04 12:00 Traffic Accidents\_Steering Clear of the Leading Cause of Fatalities.wmv

**TexasMutual**<sup>®</sup>  
WORKERS' COMPENSATION INSURANCE  
WORK SAFE, TEXAS<sup>™</sup>



Contact email: [safety@texasmutual.com](mailto:safety@texasmutual.com)  
Contact phone: 844-WORKSAFE (844-967-5723)